



SPEED
QUALITY
EFFICIENCY



aluminium[®]
formwork

ABOUT US



MFE (Mivan Far East) started life in 1991 as part of one of the UK's best known construction companies Mivan Ltd, and revolutionised the way reinforced concrete buildings are constructed.

MFE were the first in the world to successfully commercialise the use of aluminium formwork on an industrial scale, and after years as market leaders, our customers know the benefits of MFE come from our experience, reliability and dependability. Our company values provide us with a solid foundation to offer concrete forming solutions that deliver faster construction times and achieve higher quality and increased efficiency on site.

Opened in 2015, our global headquarters and manufacturing center in Kuala Lumpur, Malaysia is spread over 15 acres and boasts a state-of-the-art manufacturing facility with extensive design and development resources to ensure that MFE continues to be the industry leader.

MFE Aluminum formwork allows our customers to build concrete structures that are strong, accurate in dimensions, and provide high quality finished concrete surfaces. At the same time, the MFE system is easy to use, significantly speeds up construction times, and can provide substantial savings in overall construction costs.

SINCE 1991 MFE FORMWORK HAS BEEN USED TO BUILD MILLIONS OF APARTMENTS, HOUSES, HOTEL ROOMS AND OFFICES IN OVER 50 COUNTRIES.

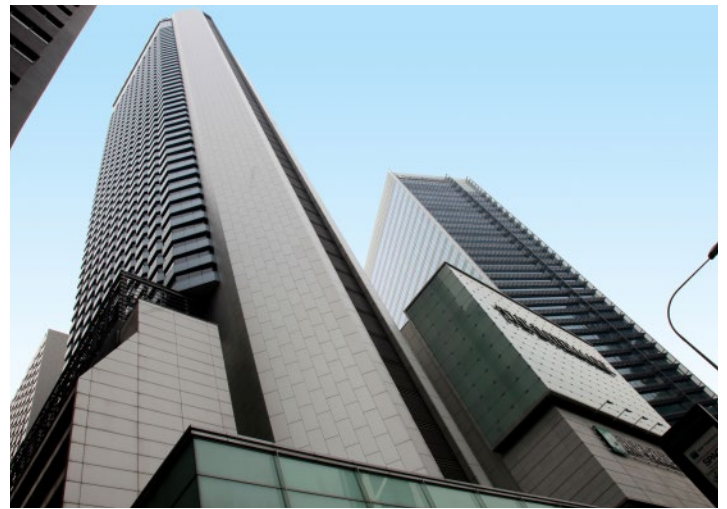


THE MFE ADVANTAGE

By understanding the needs of modern concrete construction and the requirements of developers and contractors globally, we are able to offer our vast experience to create a 'value add' to every project, in each and every country we work in.

From custom formwork system design, through to formwork manufacturing and on-site technical and construction operation support, MFE is able to provide a complete formwork solution for all types of concrete structures.







MFE FORMWORK SOLUTIONS

MFE Aluminium System Formwork

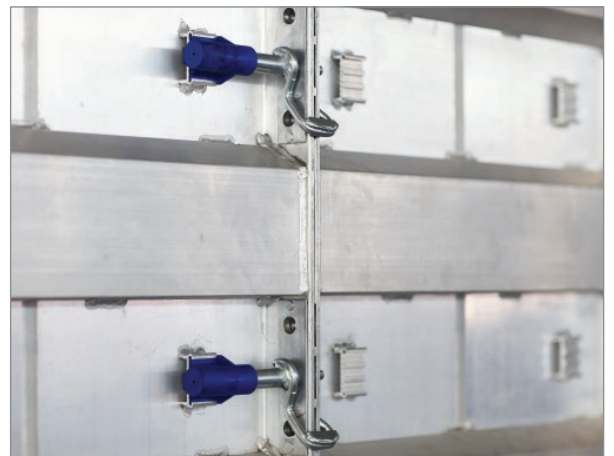
MFE offers a revolutionary aluminium formwork construction system which has been developed and successfully used around the world to form cast-in-place reinforced concrete structures.

FAST CONSTRUCTION TIMES AND HIGH QUALITY CONCRETE FINISHES MAKE MFE FORMWORK THE BEST CHOICE

Using MFE aluminum formwork, all structural building components can be cast in concrete in a single operation that dramatically reduces construction times and results in an extremely strong and high quality concrete structure.

The formwork is custom designed and made-to-measure for each project and is able to monolithically form all components at the same time including

- Walls
- Floor slabs
- Columns and Beams
- Stairs
- Balconies
- Door and window openings are also incorporated



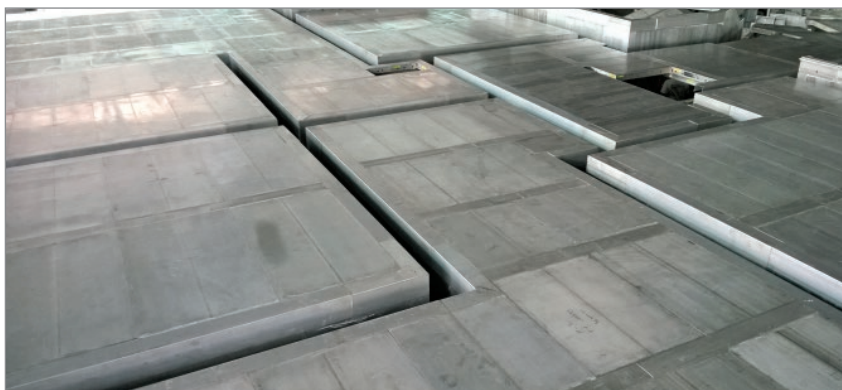
The resulting structure is extremely strong, highly accurate, and achieves a high quality surface finish with only minimum “skim coat” required for final surface finishing.

Using the MFE system, our customers are able to dramatically increase the speed of construction with high-rise buildings constructed at a rate of 4-5 days per floor and landed properties constructed at a rate of one house per day using a single set of forms.

MFE aluminium formwork systems can be operated by trained non-skilled workers and requires no specialist tools or equipment.

MFE ALUMINIUM FORMWORK PANELS ARE ADAPTABLE FOR A NUMBER OF CONCRETE FORMING REQUIREMENTS

MFE formwork is easily adapted to all types of concrete forming requirements, from office towers, hotels and up-market high-rise condominiums, to single and double story homes and affordable housing projects.



MFE QUICK DECK FORMWORK

MFE Quick Deck is designed to construct large slab areas quickly, safely, with minimal labour, and is fully compatible with all MFE formwork systems.

The 2.16m² lightweight aluminium panels are simple and safe to erect using a minimum of only two workers by swivelling the panel upwards from below and locking it into our quick release prop heads for a fast, safe and systematic assembly procedure.

Removing the formwork is also simple with our specially designed quick release prop head that allows the panels to drop from the formed surface without disturbing the prop. The newly developed 2-stage lowering function of the quick release prop head prevents panels from accidentally falling during dismantling and speeds up the formwork striking process.

Quick deck panels are capable of withstanding concrete pressures of 11.5KPA and have a usable lifespan of more than 400 re-uses.

As quick deck formwork panels are standard sizes and not specifically designed for one project, they are able to be re-used repeatedly on new projects without additional design costs.



MFE RETAINING WALL FORMWORK

MFE aluminium panels are also ideal for retaining wall, basement and foundation projects and can be supplied in standardised panel sizes for maximum re-usability, or customised panels designed specifically for a project.

The lightweight aluminium panels do not require cranes or lifting equipment on site and are simple and easy to use. Standard panels can be provided in both metric and USA imperial sizes which are also compatible with other USA aluminium formwork products.

With a wide range of tools and accessories available for any kind of job, MFE wall formwork will give you flexibility, speed and a formwork solution built to last.

HIGH RE-USABILITY AND 100% RECYCLABLE



MFE FORMWORK CAN BE RE-USED FOR MULTIPLE CONSTRUCTION PROJECTS TO MAXIMISE RETURN ON INVESTMENT (ROI)

MFE aluminium formwork panels are designed for strength and maximum usability. This provides the ability to utilise your existing MFE panel stock into new project designs in order to maximise the value and return on investment of your MFE formwork assets.

Typically 70% of formwork from previous projects can be utilised on new projects, and our designers will integrate your stock panels into the design of new projects to minimise costs and maximise formwork usage.

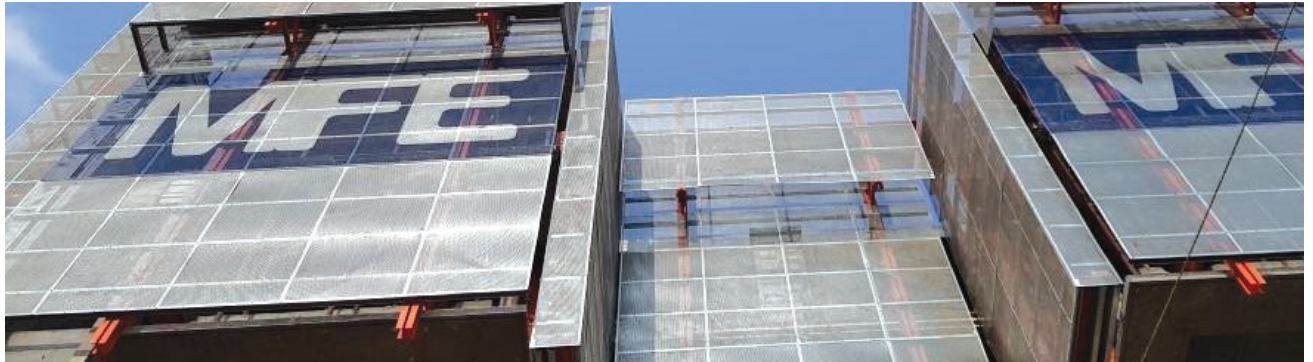
MFE formwork panels are manufactured using high grade aluminium alloy for strength and this material is 100% recyclable with high scrap values. Special panels that cannot be re-used for future projects can be scrapped and the high scrap value recovered.



RE-USING MFE FORMWORK WILL SUBSTANTIALLY REDUCE FUTURE PROJECT FORMWORK COSTS

- Panels can be re-used hundreds of times
- No timber or plywood consumable costs
- Stock panels can be integrated into new project designs
- Re-using stock formwork reduces the cost of future projects
- Maximises return on MFE formwork investment
- 100% recyclable with high scrap value

SAFETY SYSTEMS



SAFETY IS INCORPORATED INTO MFE FORMWORK TO PROVIDE SAFE WORKING AREAS

The MFE integrated working platform brackets provide worker safety for formwork erection and dismantling, and eliminates the need for traditional scaffolding during construction.

Our optional Safety Platforms provide ultra-safe working environments during construction with a totally enclosed area for worker safety and protection from the weather.

The MFE Self-climbing Safety Platform is powered hydraulically and is able to climb up the building as work proceeds, or can be quickly positioned by crane if the site has sufficient crane time available.

The Safety Platform is available in several versions to provide the ideal solution for every requirement and building type, and can be supplied to cover 2 or 3 working levels of a structure with a 1.5m high protection guardrail at the utmost working slab.

The climbing platforms are guided by rails attached to the structure using a through bolt anchorage system and our specially designed climbing shoes to provide a totally enclosed and completely safe working space.

MFE also offer a highly effective crane lift safety platform for worker safety when constructing lift cores. With simple assembly and an ultra-safe locking system, the MFE Lift Core Platform is an ideal worker safety solution when constructing lift cores.



MFE DESIGN CAPABILITIES

DESIGN INNOVATION AND EXPERTISE FOR ALL TYPES OF CONSTRUCTION PROJECTS

The MFE engineering and design team has extensive experience in designing aluminium formwork solutions for virtually any type of construction project.

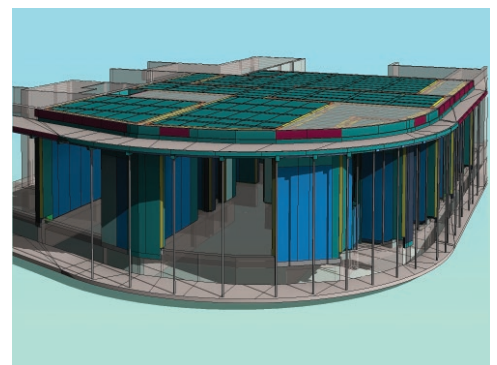
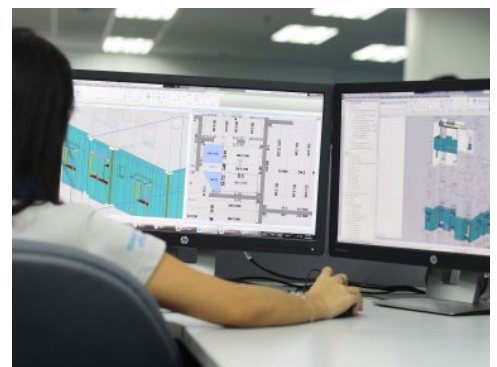
Our designers are able to maximise the cost saving and productivity benefits of MFE's formwork solutions while at the same time reproducing the building design vision and delivering the required architectural features.

MFE uses the most advanced design tools available including MFE 3D Design Software jointly developed by MFE with one of the world's leading software developers.

From simple to highly complex designs, MFE's engineers are able to produce elaborate 3D visualisations and optimise the design for rapid construction sequences and best working cycles on-site.

THE BEST FORMWORK DESIGN DELIVERS HIGH PRODUCTIVITY ON-SITE AND FORMWORK RE-USABILITY TO MAXIMISE FORMWORK ROI ON FUTURE PROJECTS

Using the architectural and structural drawings of your project, our designers will design the formwork incorporating the most efficient construction process within the design along with optimising the design for maximum efficiency and future project re-use.





MANUFACTURING & QUALITY

PRODUCTION CAPACITY OF OVER 1 MILLION SQUARE METRES OF FORMWORK PER YEAR

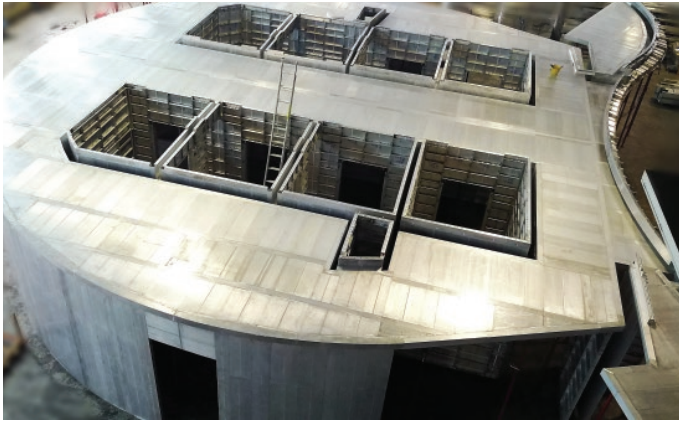
Using the latest manufacturing technologies and production techniques results in the highest possible quality and a longer service life for all of our products. MFE is a pioneer and one of the largest users of Friction Stir Welding technology in the world, having introduced the technology into our production process in 2012.



Friction Stir Welding enables us to weld aluminium panel components without using gas heating or flux to minimise panel distortion and achieve the highest welding strength possible.

Each piece of formwork manufactured is bar-coded and receives a minimum of 4 Quality Control checks before it reaches the project site.





With ongoing investment in new machinery and new production technologies, and with the expansion of our world-class manufacturing facilities, MFE is able to produce over 1.5 million square metres of formwork per year.

Working to international ISO and UKAS quality standards, and a constant program of production staff training and up-skill strategies ensures MFE products are manufactured to the highest quality for a longer usable lifespan.





MFE TECHNICAL AND ON-SITE SUPPORT

OUR EXPERT TECHNICAL AND ON-SITE SUPPORT TEAM WILL MAKE YOUR PROJECT A SUCCESS

MFE Technical Support engineers bring a wealth of experience and understanding to ensure your construction site is fast, efficient and safe.

Our technical teams have successfully utilised MFE formwork on all types of construction projects and building types in over 50 countries.

MFE experts will be on-site anywhere in the world to support and train our customer's construction teams through the entire process from system set-up to hitting the target build cycles and quality benchmarks.

The MFE site supervisors will check that all formwork delivered to site is complete and ready for use, and carry out on-site training and implement efficient, productive and safe work practices.

MFE FORMWORK SYSTEM BENEFITS



Reusable

MFE Formwork can be used 300 - 500 times so ROI is maximised with multiple projects.



Lightweight

Average weight is only 23 - 25 kg M² so no heavy lifting or cranes are required.



Fully recyclable

Aluminium formwork is 100% recyclable at the end of its usability.



Reduce site rubbish

Constant reuse keeps the construction clean, safe and tidy.



Simple to use

Can be assembled with non-skilled labour with simple training and no special tools required.



Fast build cycles

Typical cycle time of 1 floor every 4-5 days or 1 single storey house a day are achieved with MFE Formwork solutions.



Finish quality

Achieves a high quality finish after formwork removal with only minimum "skim" coat required and no heavy plastering.



Design flexibility

MFE design team are highly experienced in designing formwork solutions for multiple types of building and applications.



Strength & Stability

High load bearing capacity of up to 60 kN per M² when assembled.



Reduce building costs

Substantial direct and indirect building cost reduction is achieved with MFE aluminium formwork solutions.

CONTACT US

Malaysia

Global Headquarters & Manufacturing MFE Formwork Technology Sdn Bhd

Lot 4 & 6 Jalan Tun Perak 3
Perdana Industrial Park, 42000 Port Klang
Selangor Darul Ehsan, Malaysia

T: +60 (3) 3375 3000

F: +60 (3) 3375 3198 / 3199

Email: enquiries@mfeformwork.com

India

MFE Formwork Technology (I) Pvt. Ltd.

Unit No. 504, Tower-1, Star Hub, Airport Road
Behind ITC Grand Maratha Hotel
Andheri (East), Mumbai - 400 099, India

T: +91 (0) 22 6180 5200

Email: enquiries@mfeformwork.com

Dubai

MFE Formwork Technology Sdn Bhd (Branch)

Office 6EB-G23, Dubai Airport Free Zone
P.O. Box 54635, Dubai, UAE

T: +971 (0) 56 315 8539

Email: enquiries@mfeformwork.com

Philippines

MFE Formwork Technology

9th Floor, Filinvest One Building
Northgate Cyberzone
Alabang-Zapote Road Corner Northgate Avenue
Filinvest City, Alabang, Philippines

Email: enquiries@mfeformwork.com

www.mfeformwork.com



aluminium[®]
formwork
speed • quality • efficiency