



The new lightweight, fully reusable aluminium formwork system from MFE to construct large slab areas quickly, safely and with minimal labour resources

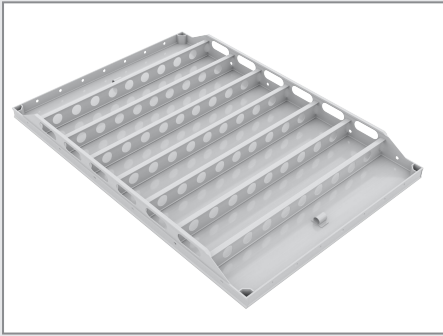
ANOTHER INDUSTRY INNOVATION FROM MFE FORMWORK TECHNOLOGY



aluminium[®]
formwork
speed • quality • efficiency

WE LEAD, OTHERS FOLLOW

LIGHT, STRONG, SAFE AND FAST

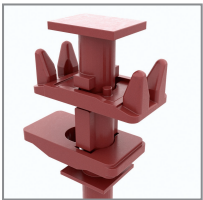


Quick Deck is a light-weight aluminium formwork system designed to enable the construction of large slab areas using minimal labour, with the flexibility to fully integrate with all MFE formwork systems.

The 1.2m x 1.8m (2.16 m²) deck panels are suitable for slab thicknesses of up to 375mm with a usable lifespan in excess of 400 re-uses with proper care and maintenance.

With Quick Deck panels weighing only 32 kg, they are easily handled without the need for heavy lifting equipment.

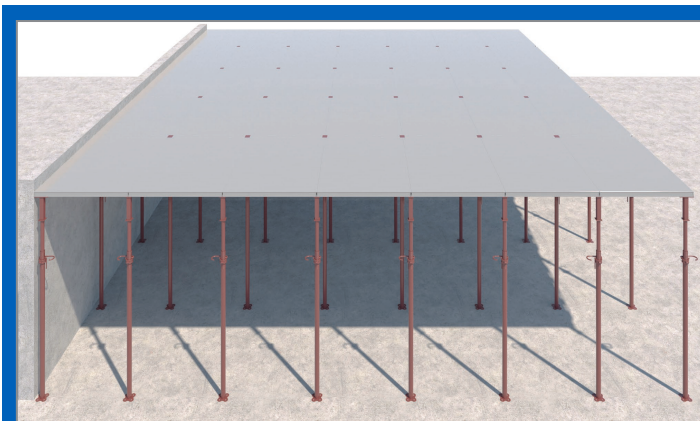
The standard size panels give flexibility for all projects and the opportunity for maximum re-usability of Quick Deck stock. Special in-fill zones are easily managed with our unique MFE IN-FILL extrusion for simple integration of timber/plywood for in-fill areas around columns, beams, walls etc.



Quick Deck can be set-up and dismantled with a minimum two-man crew. The panels are simply tilted up and locked onto the Quick Deck crown head so the system is safe to operate with a semi-skilled crew with basic training.



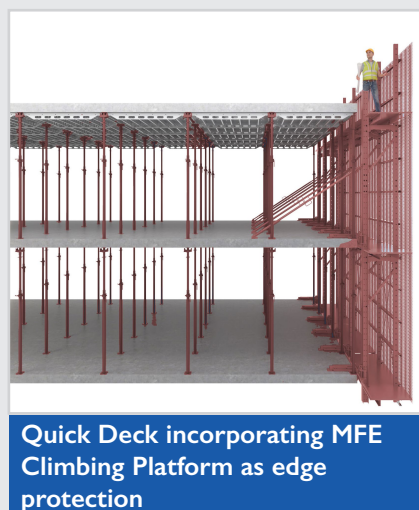
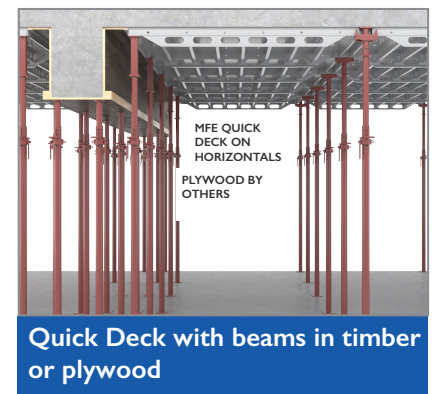
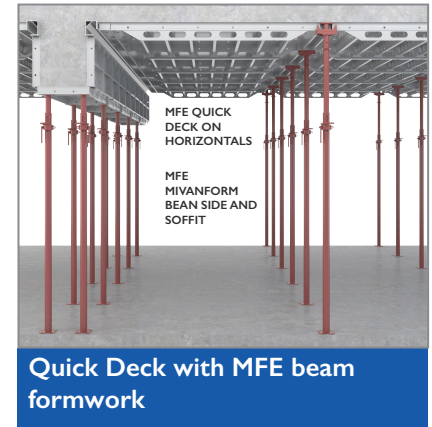
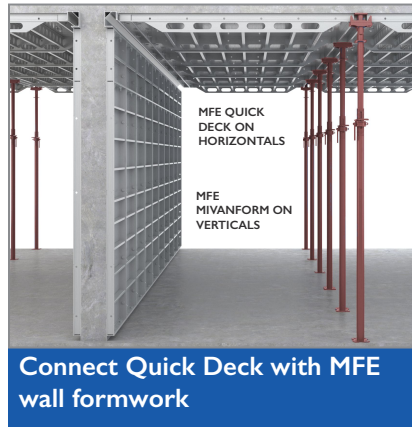
The Quick Deck quick-release prop allows the formwork panels to be removed in 36 hours while leaving the prop head in place to support the slab for extended periods.



Quick Deck is typically supplied with a minimum of two sets of props so that fast work cycles can be achieved.

FLEXIBILITY IN DESIGN

Quick Deck can be used with other MFE Formwork systems to create a complete monolithic system for ultimate project speed, efficiency and flexibility, or integrated with traditional methods for structural components or in-fill areas.



TRAINING

MFE Technical support will provide on-site training to your teams to ensure that the system is used efficiently and maintained to provide maximum reusability.

SAFETY

Edge protection and safety is also an integral part of the system to ensure a safe working environment





aluminium®
formwork
speed • quality • efficiency

Malaysia

Global Headquarters & Manufacturing MFE Formwork Technology Sdn Bhd

Lot 4 & 6 Jalan Tun Perak 3
Perdana Industrial Park, 42000 Port Klang
Selangor Darul Ehsan, MALAYSIA

T: +60 (3) 3375 3000

F: +60 (3) 3375 3198/3199

Email: enquiries@mfeformwork.com

India

MFE Formwork Technology (I) Pvt. Ltd.

Unit No. 504, Topwer-I, Star Hub, Airport Road
Behind TC Grand Maratha Hotel
Andheri (East), Mumbai – 400 099, INDIA

T: +91 (0)22 6180 5200

Email: enquiries@mfeformwork.com

Dubai

MFE Formwork Technology Sdn Bhd (Branch)

Office 6EB-G23, Dubai Airport Free Zone
P.O. Box 491, Dubai, UAE

T: +971 (0)50 2410223

F: +971 (0)4 391 6863/ 263 4140

Email: enquiries@mfeformwork.com

Philippines

MFE Formwork Technology

9th Floor, Filinvest One Building,
Northgate Cyberzone,
Alabang-Zapote Road corner Northgate Avenue,
Filinvest City, Alabang. Philippines

Email: enquiries@mfeformwork.com

www.mfeformwork.com

